



# POSOW

Preparedness for Oil-polluted

Shoreline cleanup and

Oiled Wildlife interventions

## Setting up and running a command centre for oiled wildlife

- Why a command centre is needed
- What is going on in a wildlife response
- Functioning of a command centre
- Setting it up
- Daily management



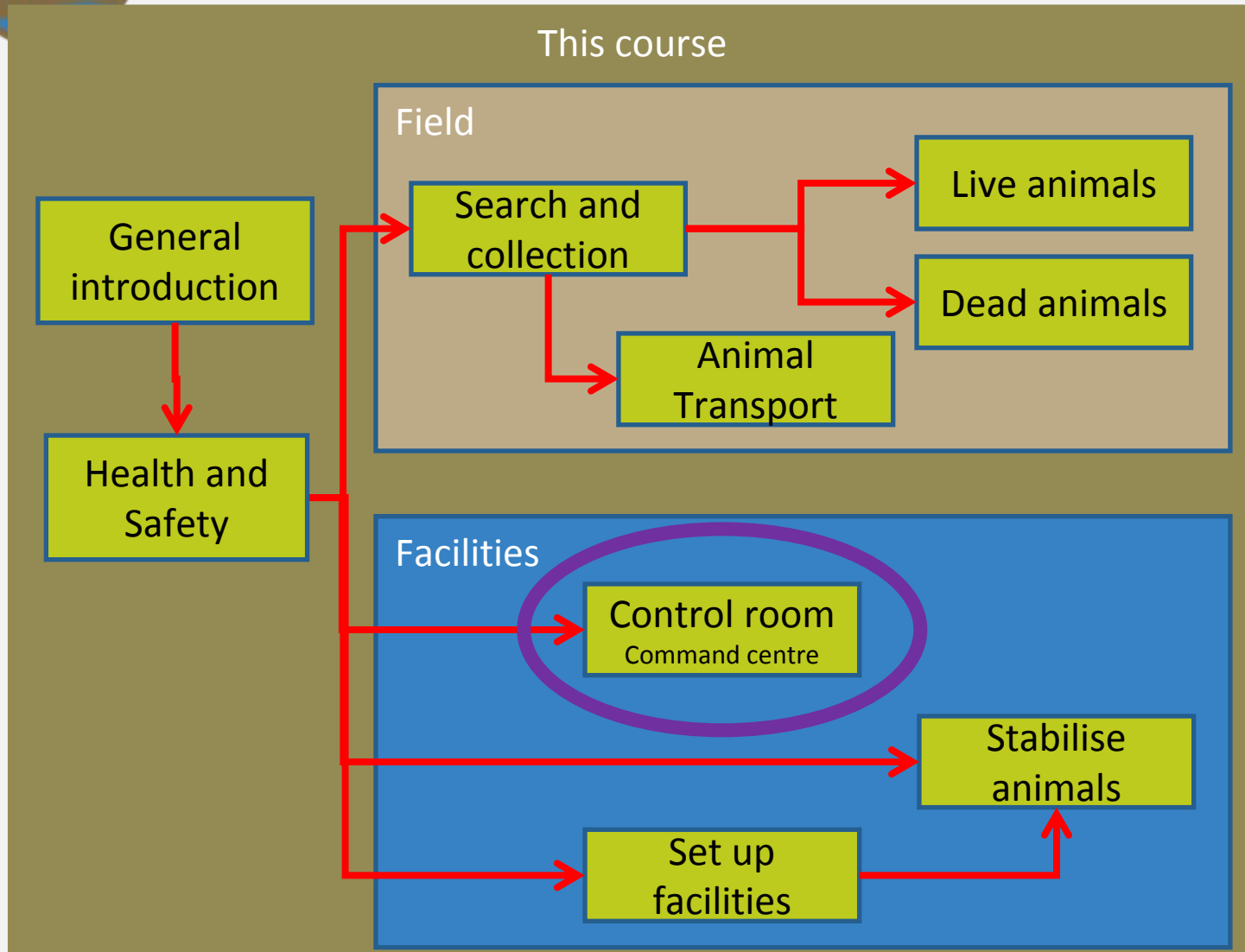


POSOW

Preparedness for oil-polluted

Shoreline cleanup and

# Overview of the wildlife course



Not included

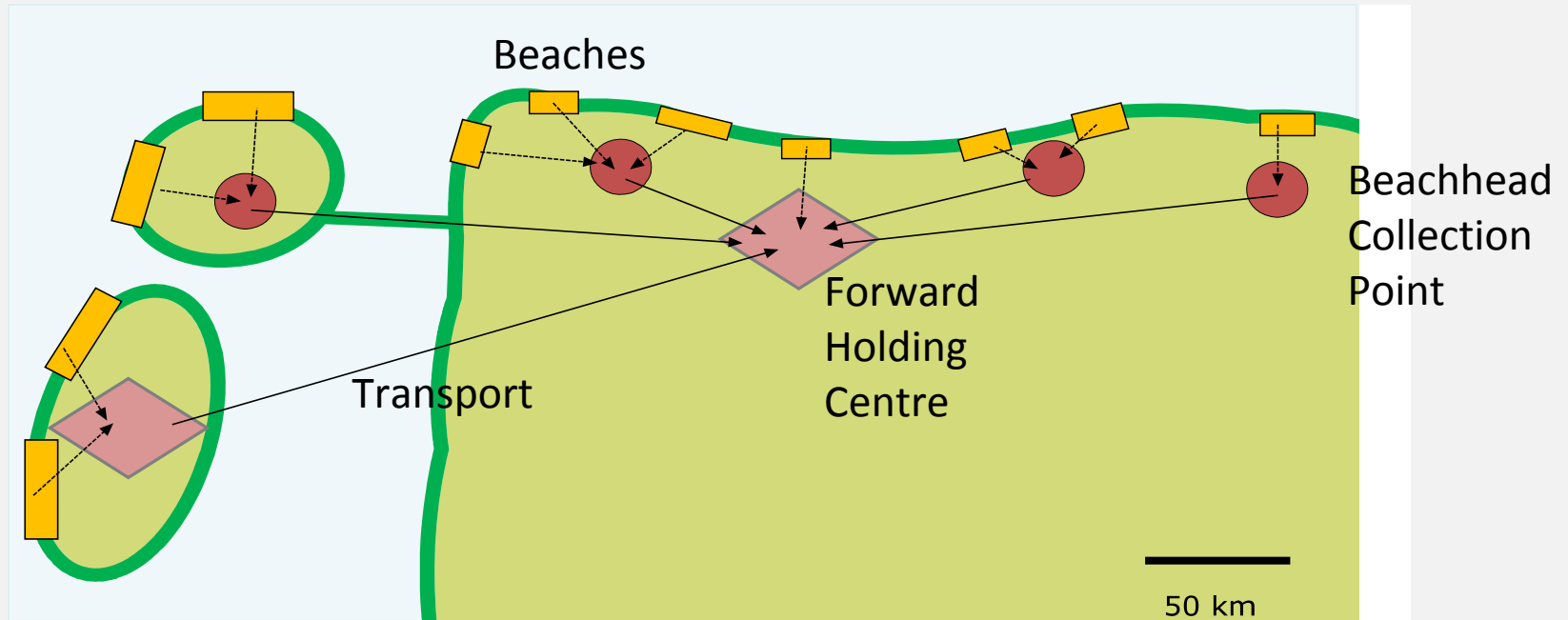
Triage  
Washing  
Rehab  
Release

# Why is a command centre needed?

- Overseeing the wildlife response
  - Managing resources in wildlife response
  - Daily data collection
  - Planning and decision making
- Communication with incident command centre

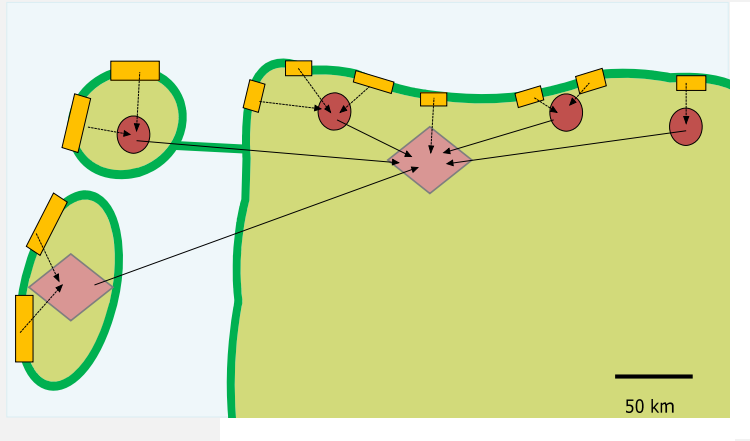


# What is going on?



- Beaches: Search and collection
- BCP: Temporary holding
- FHC: Stabilisation, keep animals alive
- Transport

# Functioning of a command centre



What happens today?

- Who? What? Where? How?
- Bottlenecks reported



Management decisions

- Ensure implementation

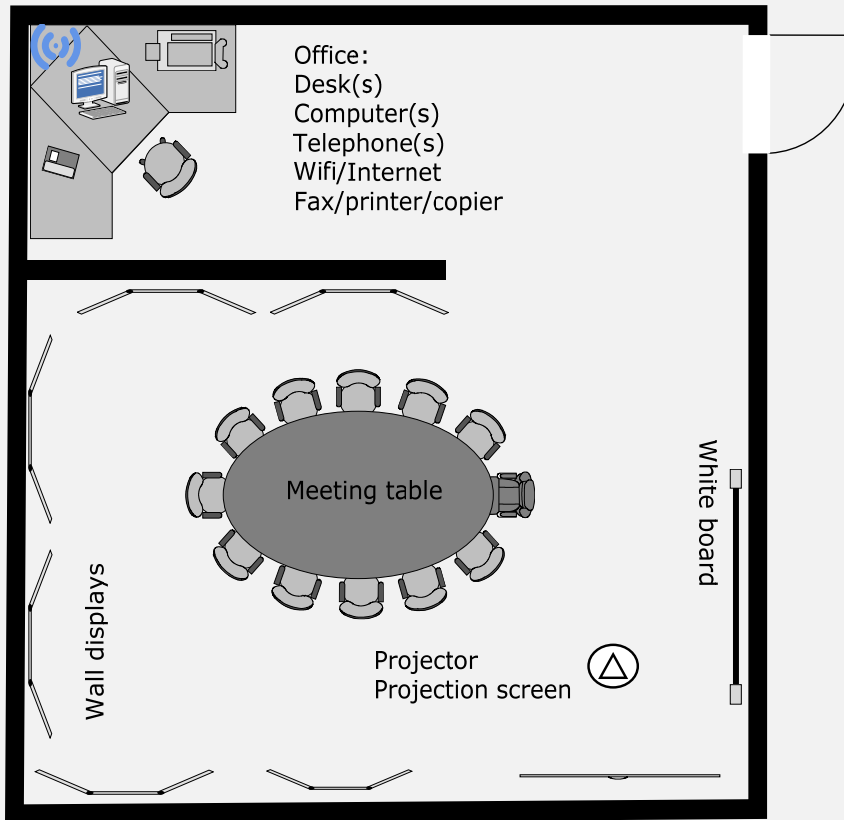


Planning for tomorrow

- Who? What? Where? How?
- Make sure it can happen

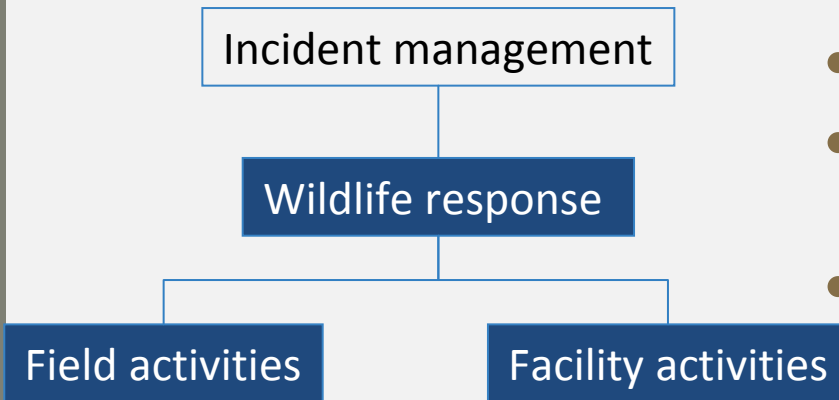


# Setting it up



- Where?
  - Three possibilities:
    - Incident command centre
    - In an office (ministry?)
    - At the rehab center
- How?
  - Office (equipment)
  - Meeting room
  - Displays (on wall)

# Daily management



- Divide roles and responsibilities
- Ensure direct connection with incident command centre
- Collect data from:
  - Field activities
  - Transport activities
  - Facility activities
- Put collected data on display (ensure updating)
- Take management decisions
  - Scheduled meetings



# POSOW Manual

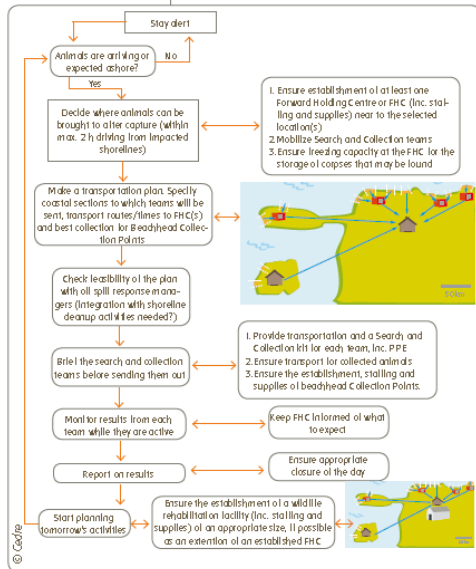
1

## Managing the early days of a wildlife response

When an oil spill is reported, animals may already have started arriving on the shoreline. This sheet provides guidance as to how to start up an effective response:

ensuring that animals are picked up safely and transported to facilities where they receive care for several days before being washed.

Types of facilities (explaining symbols in figures)



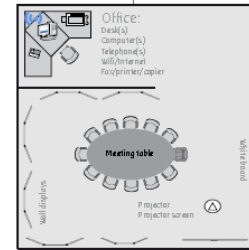
36

## Setting up and running a command centre

Example of the physical set-up of the command centre with a checklist of its equipment

The command centre is an important place in the wildlife operations. It must be set up as an integrated part of the overall spill

management, so that decisions can be made overseeing all the relevant information on both sides.



- Office**
  - Desk (s) and chairs
  - Office tools (paper, pens, tape, stapler, hole punch...)
  - Computer
  - Internet connection (wifi)
  - Telephone land line(s)
  - Fax/printer/copier
- Meeting room**
  - Meeting table and chairs
  - Wall displays (or empty walls)
  - Flip chart with paper and pens
  - Whiteboard with pens and cleaner
  - Projector
  - Projector screen (or white wall)

Suggestions for organising the information on display in the meeting room

Heading	Information presented (printed documents or hand written on flip chart sheets)
Spill history	The source of oil, date of spill, exact location, oil type, amount and properties, future issues and contact information for the spill advisor
Species information	Information on species affected, habitat, distribution, identification photos, life history, previous oil spill knowledge (post-release survival data) and care/washing information if available
Rehabilitation Process	Description of process (with photos), triage policy and euthanasia policy
Key facts [Media]	Media lines, bird numbers (overview), news articles
Training programme	List of roles and trainers (with photo) for allocation of trainees
Maps	Showing oil spill area, sensitive areas, collection points and rescue facilities
Facility layout	Room plan and copy of health and safety protocols
Team information	Name, organisation, role and contact number with coordinators highlighted (can be arranged by organisation or by role)
Facility operations	Lists the number of birds in each part of the facility, updated twice daily. It helps to include a list of daily tasks, which can be ticked off when complete
Field operations	Shows who is in the field, their role and contact information, updated twice daily
Equipment requests	Central point for gathering requests, highlighted if urgent, to be checked daily

11

47



Thank you very much!

Questions?

Des questions?

ερωτήσεις?

Otázky?

Domande?

Preguntas?

Mistoqsijiet?

Vprašanja?





# POSOW

Preparedness for Oil-polluted

Shoreline cleanup and

Oiled Wildlife interventions

## Disclaimer

All material produced under POSOW is available free of charge. No part of this PowerPoint presentation shall, by way of trade or otherwise, be lent, sold, hired or circulated for commercial purposes. The information available on this presentation is aimed only at facilitating access to information in the field of preparedness for and response to pollution from ships in the Mediterranean Sea. POSOW Presentations are made available for information purposes only. Any amendment, review, and update of the material produced under the project shall be authorized by REMPEC with the consent of its Partners and shall refer to the original document developed under the project. REMPEC and its partners do not assert that this material is faultless and make no warranty, nor assume any legal liability for the accuracy, completeness or usefulness of the information contained in the Presentation. REMPEC and its partners do not assume responsibility or liability for any direct, indirect or consequential damages from the use of the material available on the PowerPoint presentations of the Project POSOW.

### Legal information

REMPEC: Regional Marine Pollution Emergency Response Centre for the Mediterranean Sea

REMPEC

Maritime House, Lascaris Wharf

Valetta, VLT 1921, Malta

Tel: +356 21 337 296/7/8

Fax: +356 21 339 951

Email : [rempec@rempec.org](mailto:rempec@rempec.org)

Editor: F. HEBERT

