



POSOW

Preparedness for Oil-polluted

Shoreline cleanup and

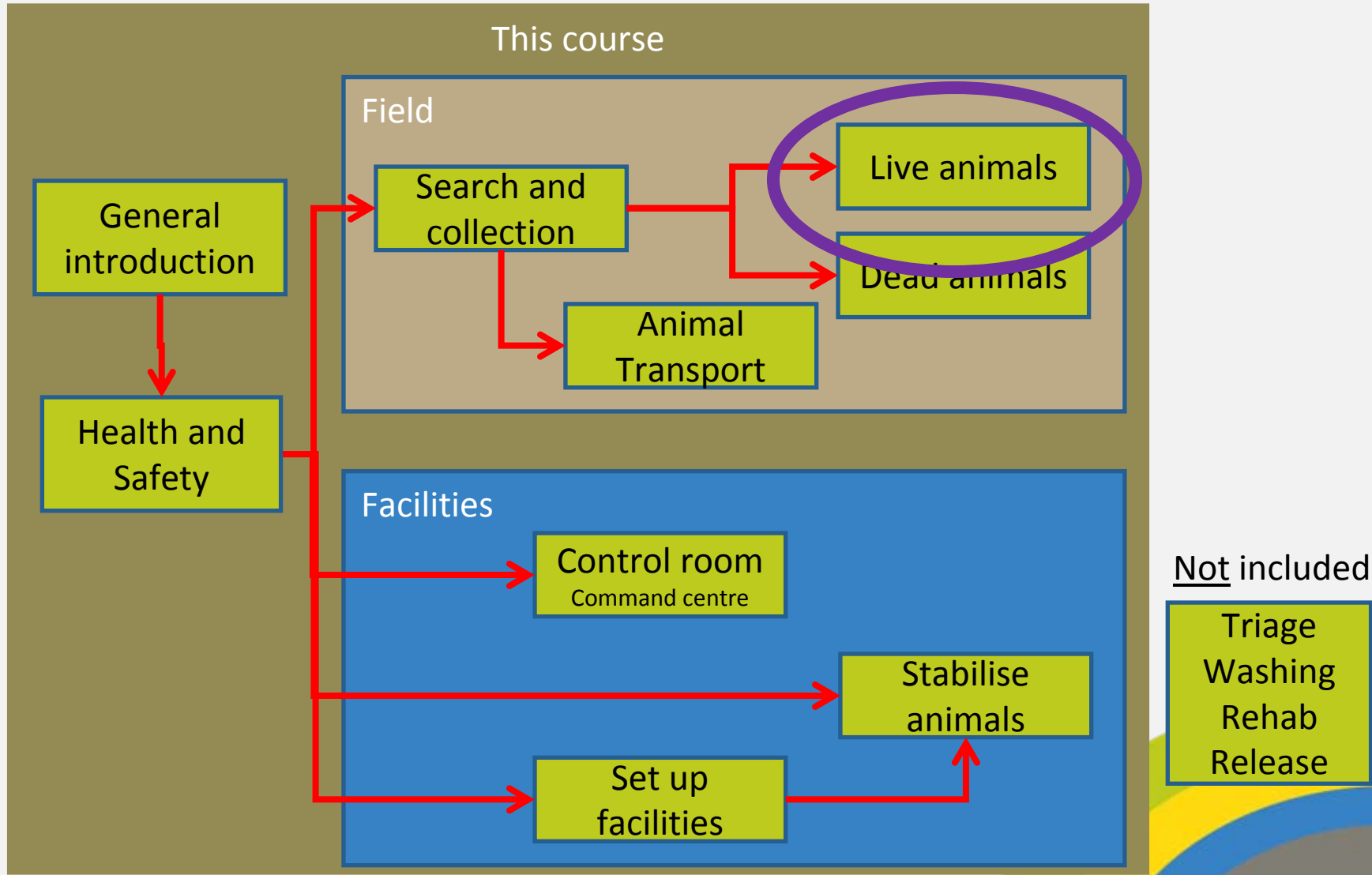
Oiled Wildlife interventions

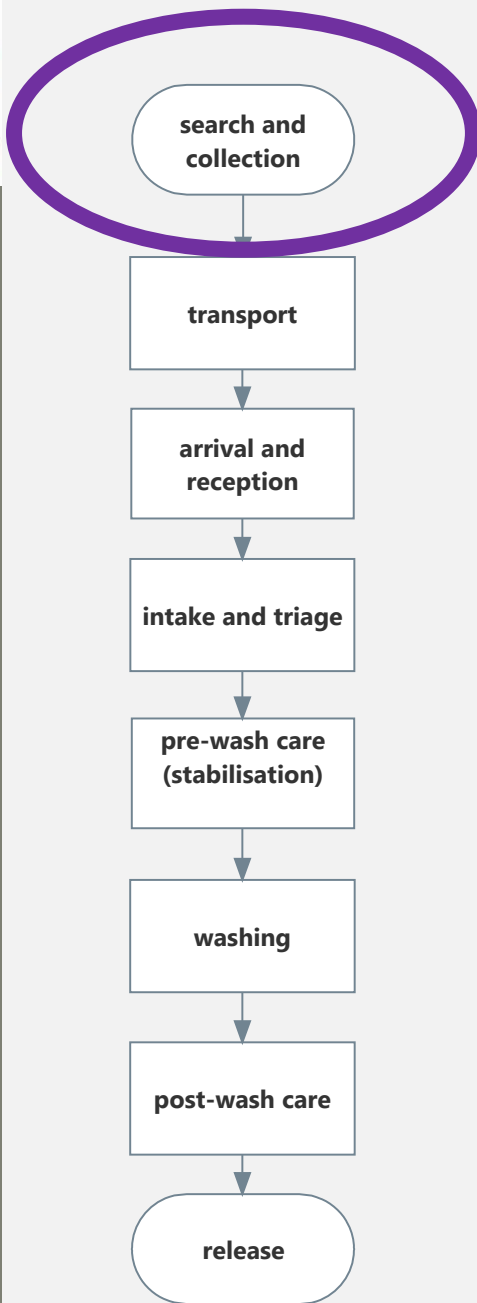
Capturing live oiled animals

- Aim of capture
- Which animals are to be captured?
- Tactics
- Capture and containment
- End of capture operation



Overview of the wildlife course





Aim of capture

- To collect, in a safe and organised way, as many affected animals as possible
 - Ensure that they are better off captured than being on the beach
 - Animals need stabilisation care immediately
 - Transport to facility ASAP
 - Facility (FHC) must be ready!
 - Don't keep animals in boxes for days

Which animals to be captured?



- Birds are by far the most common animals found affected by oil
- This search and collection guide will only deal with birds
 - With a brief reference to turtles
- Marine mammal rescue should undertaken by experienced personnel



Working in pairs



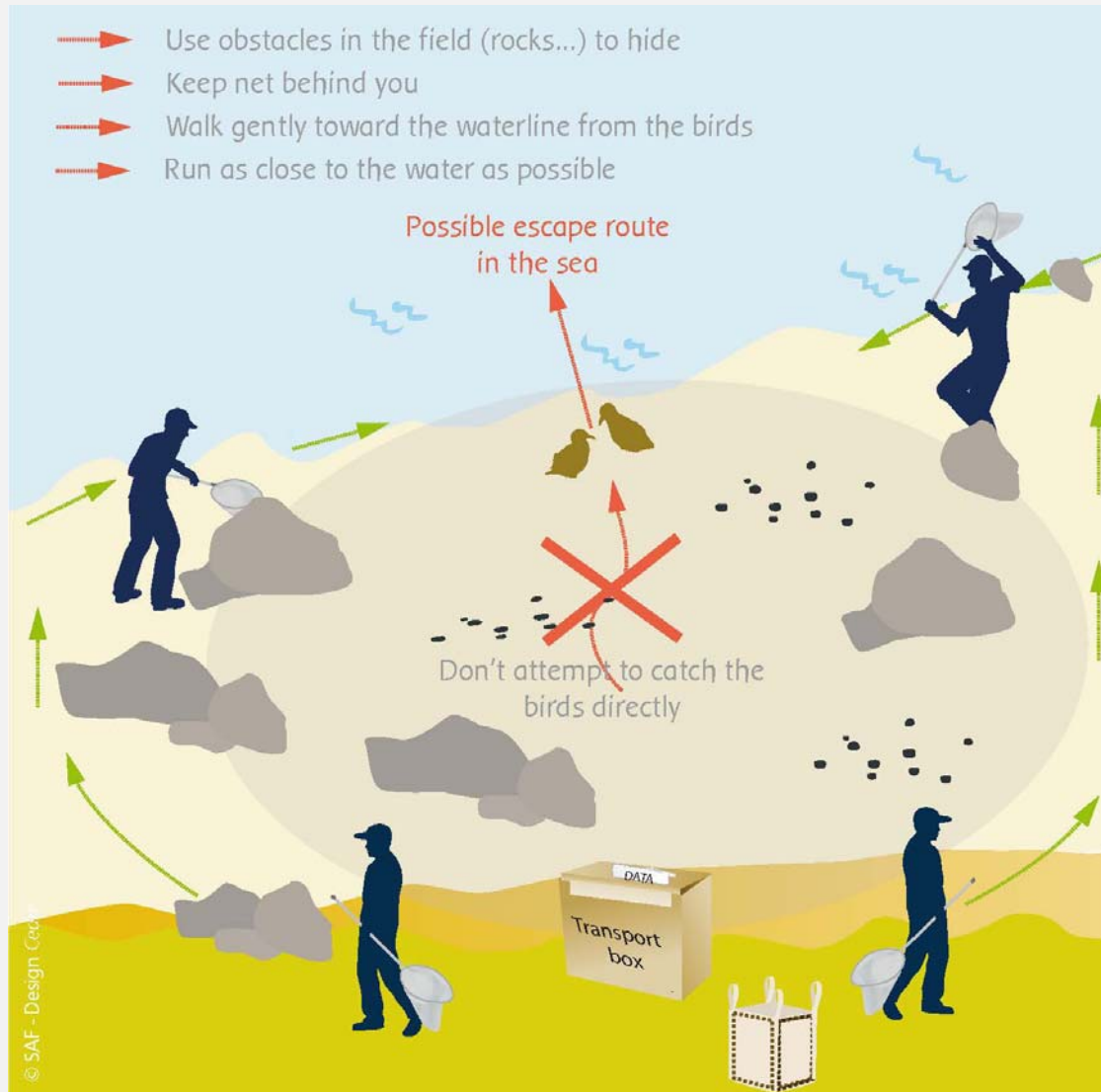
- In pairs you can look out for each other!
 - Do not get separated
 - Keep close
- A pair is more effective
- Let team leader know where you are
 - If you change plan

Tactics - Anticipate animal's behaviour



- Allows more effective capture
 - Reduces animals stress levels
 - Saves personnel energy
 - Helps predict potential danger points
 - Beak, wings, claws, flippers
- Different species, different behaviour
 - Will it recognize you as a threat?
 - Can you attract (use food)?
 - Will it fly? Dive? Walk to water?
 - Is it easy capture at night?
- Fitness of animal
 - Has it got energy to escape?
- Always assume it will defend itself!

Tactics – use the environment

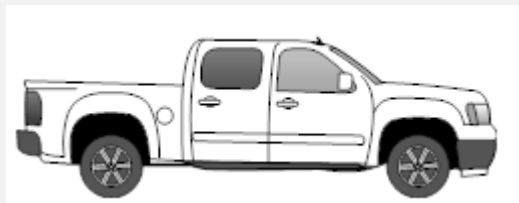


Capture and containment



- Keep the net over the animal
- Partner opens the bag or box
- Take animal out of the net
 - Bird: hold wings together, do not squeeze
 - Turtle: hold firmly either side of its body between fore and hind limbs
- Keep it away from anyone's face
- Contain in a box/cotton bag as quickly as possible

Capture and containment



- Put the animal in a suitably sized container
 - 1-3 in one box
 - Depending on species
 - Do not mix species!
- Provide information on the contents
 - Date and time
 - Location found
 - Species
 - Your name & contact
- Ensure delivery at BCP
 - Use 4x4 if available



POSOW

Preparedness for oil-polluted

Shoreline cleanup and

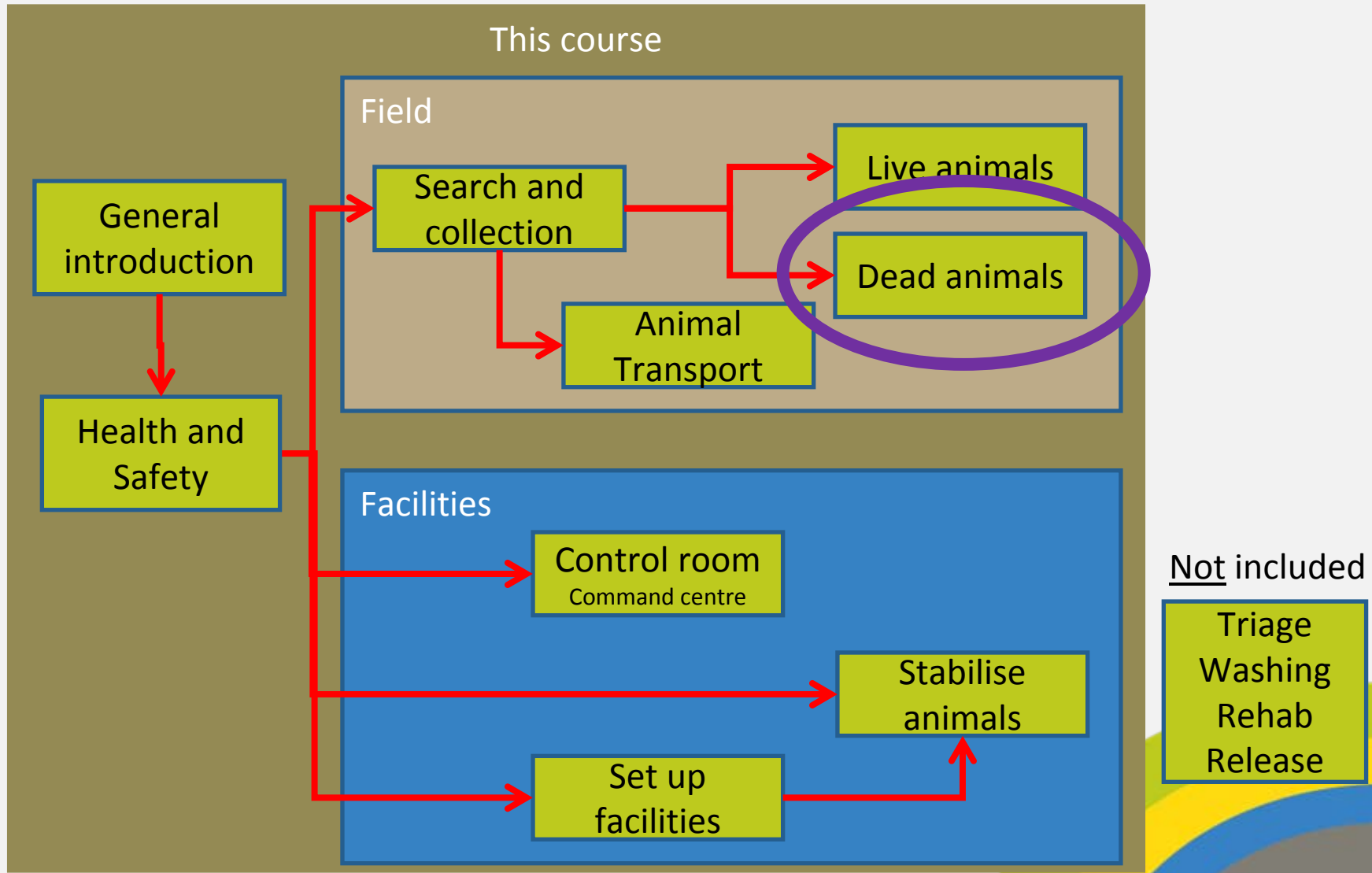
Oiled Wildlife interventions

Collecting dead animals

- Aim of collecting dead animals
- Strategy
- How to do it?



Overview of the wildlife course



Aims of collecting oiled corpses



- Provide valuable scientific information
 - How many animals have been killed?
 - Statistical information
 - Legal purposes
 - Which populations are affected?
 - Scientists will find out in a lab
- Prevents secondary pollution of predators (foxes, crows, gulls)
 - Unoiled predators may become oiled
 - They may ingest oil
- Corpses are contaminating waste
 - Should be removed



Strategy

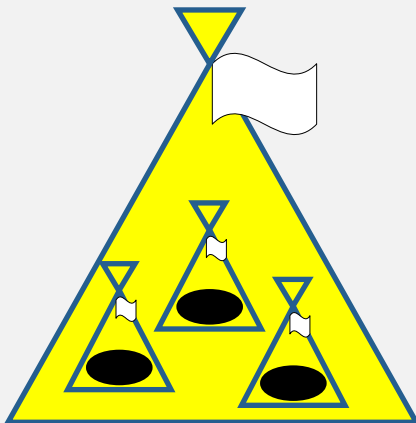


- Spotting them is not always easy
 - Under sediment/ debris
 - Under oil
- Go before the beach cleaners
 - They may not take animals out
 - Information will be lost

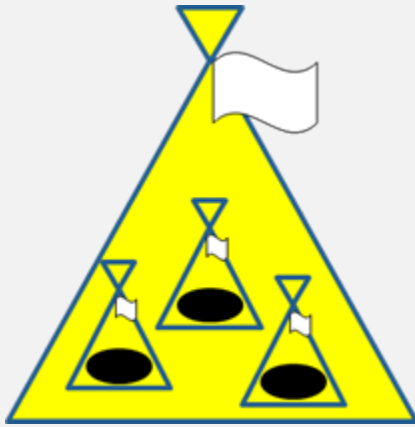
Carcasses - data collection



- Use strong plastic bags
- One animal in one bag (small bag)
 - Label this bag
 - Species (if possible)
 - Date
 - Name of the beach
- Several small bags may go into one big bag
 - Label the big bag
 - Date
 - Name of beach
 - # animals
- Ensure delivery to BCP



Why bagging them?



- Bags will go into a freezer
- Corpses will not stick together
- Animals can be presented in best possible condition



Thank you very much!

Questions?

Des questions?

ερωτήσεις?

Otázky?

Domande?

Preguntas?

Mistoqsijiet?

Vprašanja?





POSOW

Preparedness for Oil-polluted

Shoreline cleanup and

Oiled Wildlife interventions

Disclaimer

All material produced under POSOW is available free of charge. No part of this PowerPoint presentation shall, by way of trade or otherwise, be lent, sold, hired or circulated for commercial purposes. The information available on this presentation is aimed only at facilitating access to information in the field of preparedness for and response to pollution from ships in the Mediterranean Sea. POSOW Presentations are made available for information purposes only. Any amendment, review, and update of the material produced under the project shall be authorized by REMPEC with the consent of its Partners and shall refer to the original document developed under the project. REMPEC and its partners do not assert that this material is faultless and make no warranty, nor assume any legal liability for the accuracy, completeness or usefulness of the information contained in the Presentation. REMPEC and its partners do not assume responsibility or liability for any direct, indirect or consequential damages from the use of the material available on the PowerPoint presentations of the Project POSOW.

Legal information

REMPEC: Regional Marine Pollution Emergency Response Centre for the Mediterranean Sea

REMPEC

Maritime House, Lascaris Wharf

Valetta, VLT 1921, Malta

Tel: +356 21 337 296/7/8

Fax: +356 21 339 951

Email : rempec@rempec.org

Editor: F. HEBERT

