



# POSOW

Preparedness for Oil-polluted

Shoreline cleanup and

Oiled Wildlife interventions

## Vzpostavitev in delovanje štaba za reševanje zaoljenih prostoživečih živali

- Zakaj potrebujemo štab
- Kaj se dogaja pri reševanju zaoljenih prostoživečih živali?
- Delovanje štaba
- Vzpostavitev štaba
- Dnevno upravljanje



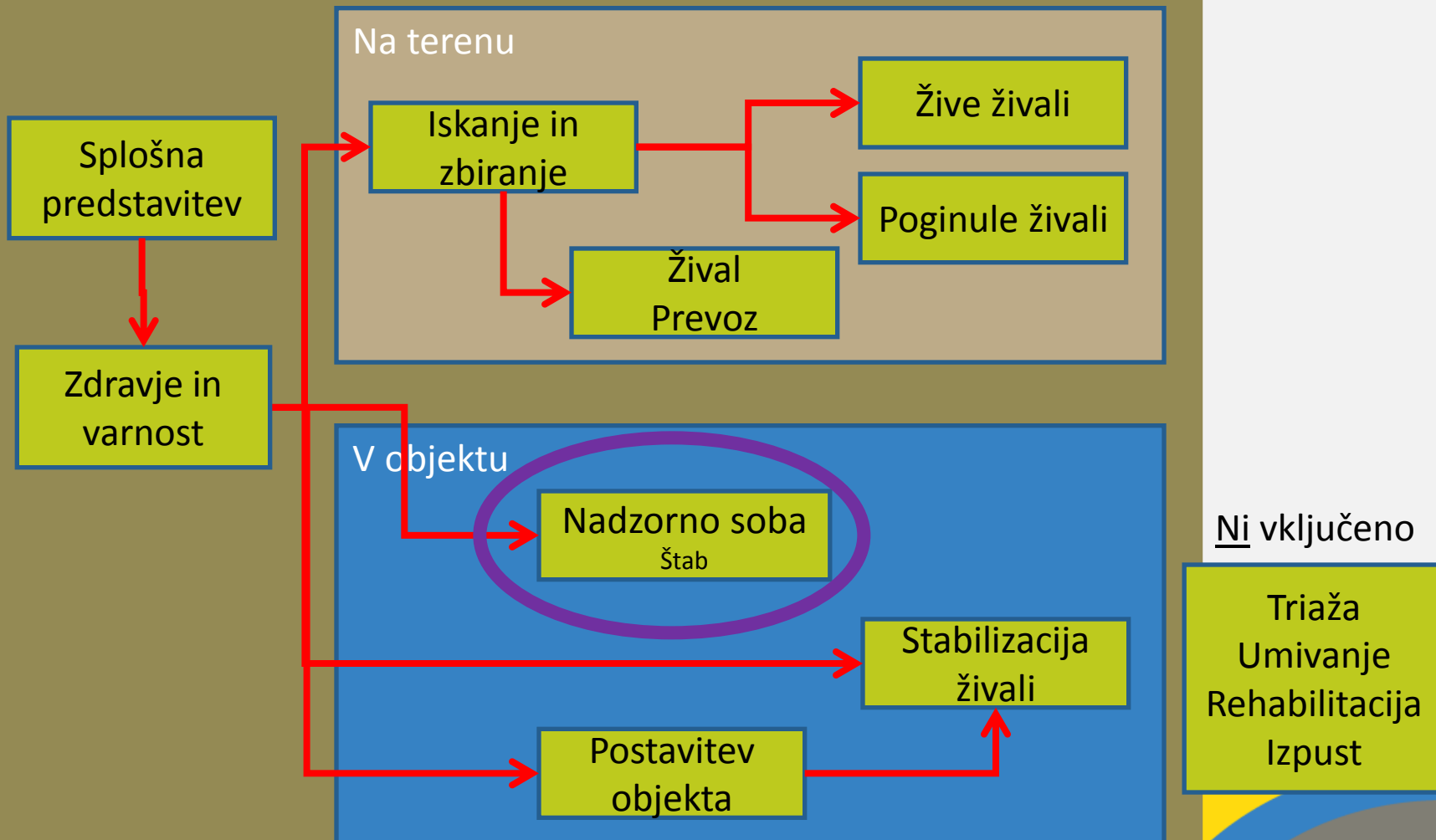
# POSOW

Preparedness for oil-polluted

Shoreline cleanup and



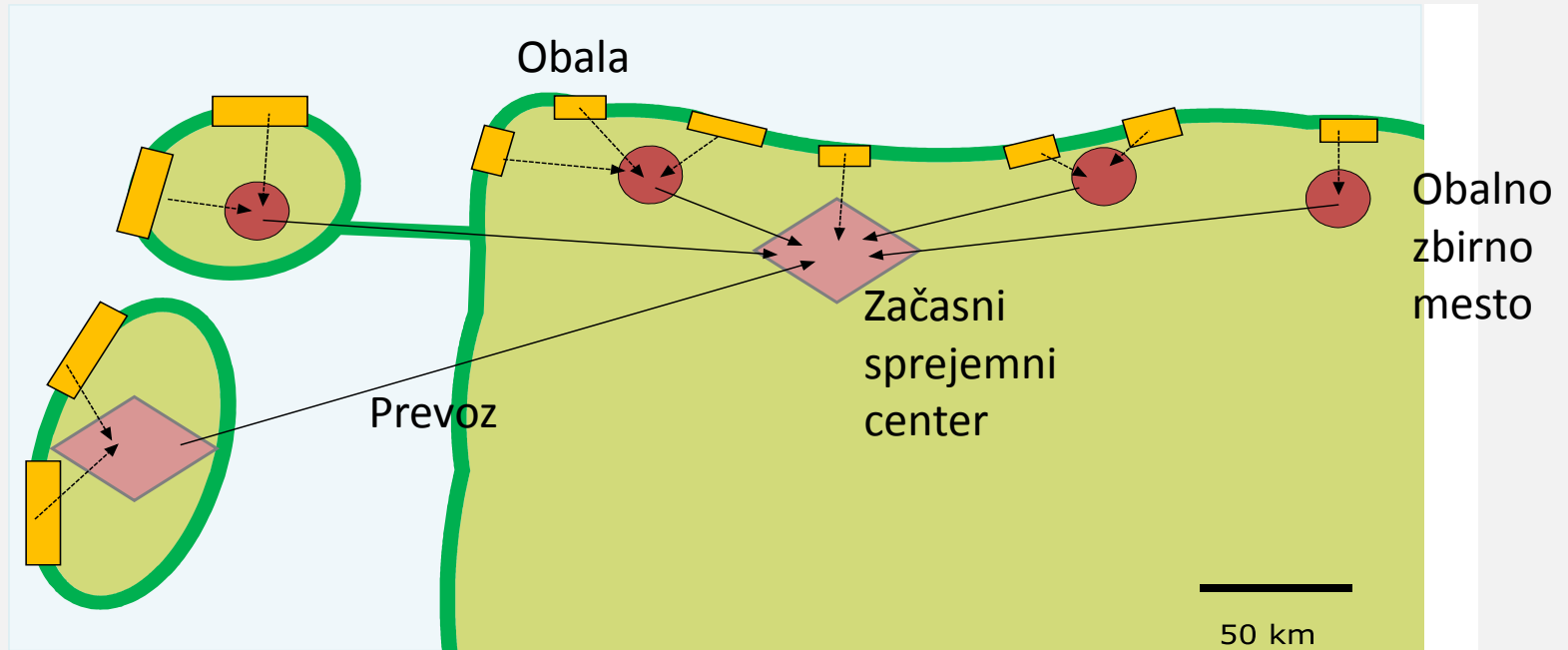
## Usposabljanje



# Zakaj potrebujemo štab?

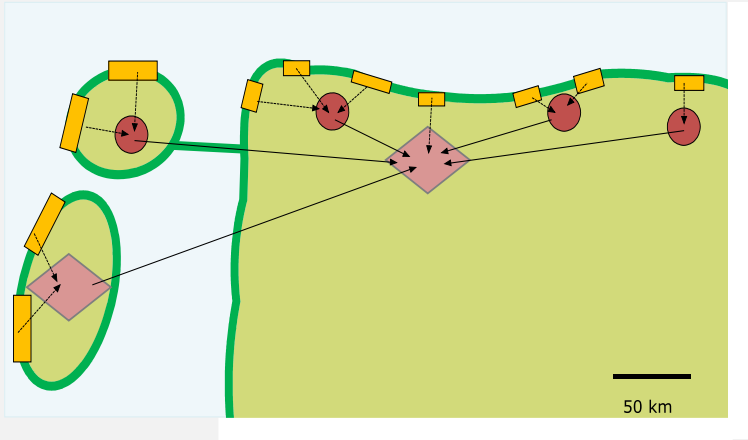
- Nadzor aktivnosti pri reševanju zaoljenih prostoživečih živali
  - Upravljanje z viri
  - Vsakodnevno zbiranje podatkov
  - Načrtovanje in odločanje
- Komuniciranje z glavnim operativnim štabom

# Kaj se dogaja?



- Obala: Iskanje in zbiranje
- OZM: Začasno pridržanje
- ZSC: Stabilizacija, ohranjanje živali pri življenju
- Prevoz

# Delovanje štaba



Kaj se dogaja danes?

- Kdo? Kaj? Kje? Kako?
- Poročila o “ozkih grlih”



Odločitve o upravljanju

- Zagotoviti izvajanje



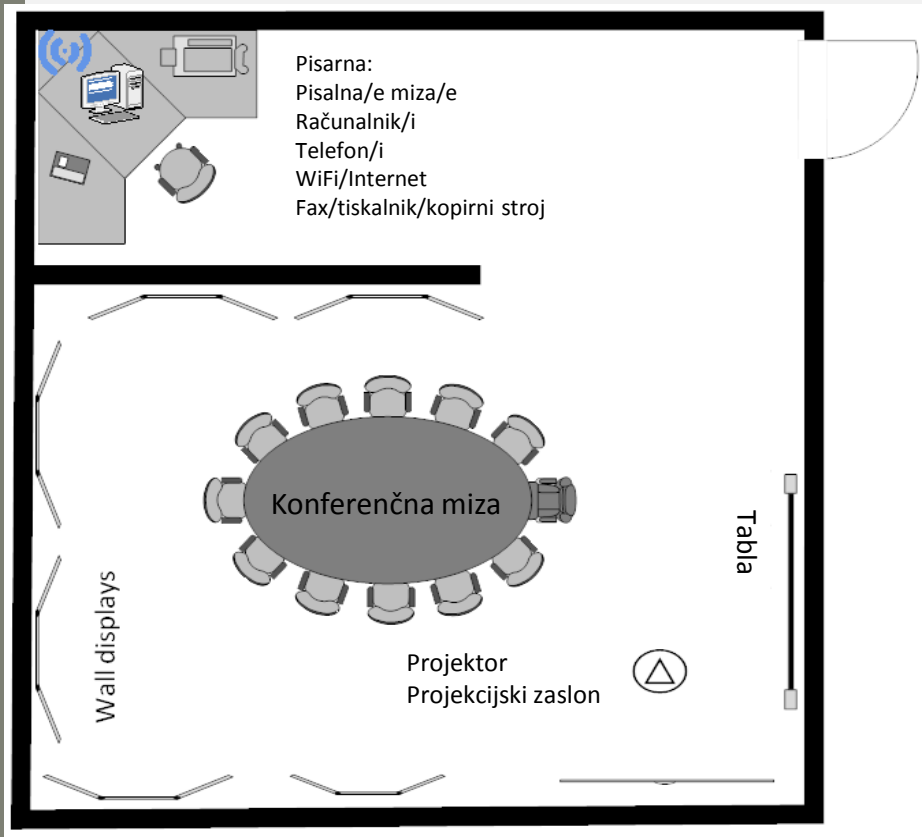
Načrtovanje za jutri

- Kdo? Kaj? Kje? Kako?
- Poskrbeti, da se lahko izvede

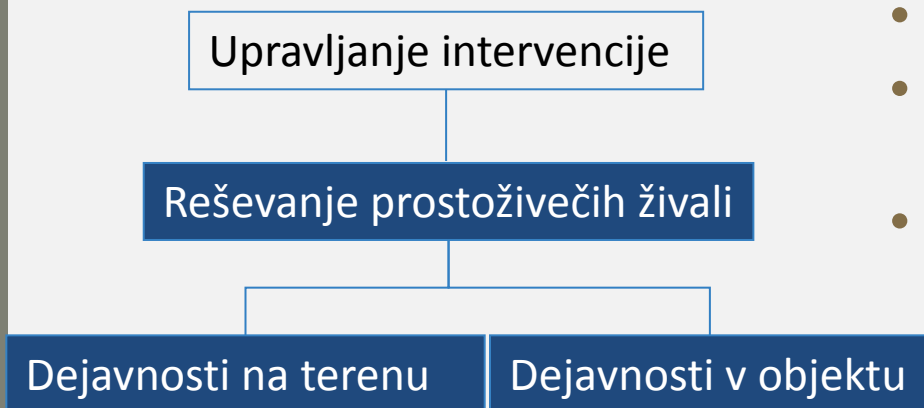


# Vzpostavitev štaba

- Kje?
  - Tri možnosti:
    - V glavnem operativnem štabu
    - V pisarni (ministrstvo)?
    - V rehabilitacijskem centru
- Kako?
  - Pisarna (oprema)
  - Sejna soba
  - Projekcijski zaslon



# Dnevno upravljanje



- Porazdelite vloge in odgovornosti
- Zagotovite neposredno povezavo z glavnim operativnim štabom
- Zbirajte podatke o:
  - Terenskih aktivnostih
  - Prevozu
  - Aktivnostih v objektu
- Prenesite zbrane podatke na zaslon (poskrbite za najnovejše podatke)
- Sprejemajte odločitve o upravljanju
  - Načrtovani sestanki



# Priručnik POSOW

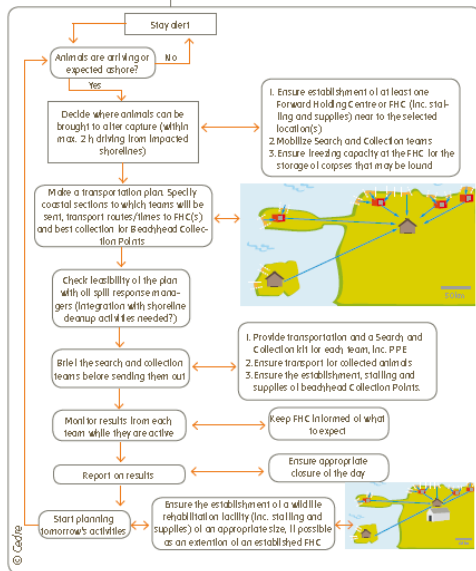
1

## Managing the early days of a wildlife response

When an oil spill is reported, animals may already have started arriving on the shoreline. This sheet provides guidance as to how to start up an effective response:

ensuring that animals are picked up safely and transported to facilities where they receive care for several days before being washed.

Types of facilities (explaining symbols in figures)



Beachhead Collection Point (BCP)

A warm and ventilated place where live animals can spend a few hours before they can be transported. No animal stays here overnight!

Forward Holding Centre (FHC)

A facility where animals can be provided with pre-wash care (see technical datasheets for set up, layout and procedures). Animals can stay here for many days, but are not released from here. Refer to Datasheet n°3.

Wildlife Rehabilitation Facility

A facility that is in fact a Forward Holding Centre extended with adequate washing and post-wash care capabilities. Setting up and running a Wildlife Rehabilitation Centre needs the involvement of qualified experts!

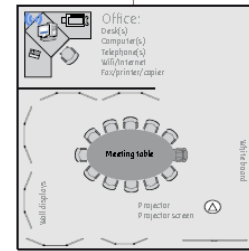
36

## Setting up and running a command centre

Example of the physical set-up of the command centre with a checklist of its equipment

The command centre is an important place in the wildlife operations. It must be set up as an integrated part of the overall spill

management, so that decisions can be made overseeing all the relevant information on both sides.



- Office**
  - Desk (s) and chairs
  - Office tools (paper, pens, tape, stapler, hole punch...)
  - Computer
  - Internet connection (wifi)
  - Telephone land line(s)
  - Fax/printer/copier
- Meeting room**
  - Meeting table and chairs
  - Wall displays (or empty walls)
  - Flip chart with paper and pens
  - Whiteboard with pens and d cleaner
  - Projector
  - Projector screen (or white wall)

Suggestions for organising the information on display in the meeting room

Heading	Information presented (printed documents or hand written on flip chart sheets)
Spill history	The source of oil, date of spill, exact location, oil type, amount and properties, future issues and contact information for the spill advisor
Species information	Information on species affected, habitat, distribution, identification photos, life history, previous oil spill knowledge (post-release survival data) and care/washing information if available
Rehabilitation Process	Description of process (with photos), triage policy and euthanasia policy
Key facts [Media]	Media lines, bird numbers (overview), news articles
Training programme	List of roles and trainers (with photo) for allocation of trainees
Maps	Showing oil spill area, sensitive areas, collection points and rescue facilities
Facility layout	Room plan and copy of health and safety protocols
Team information	Name, organisation, role and contact number with coordinators highlighted (can be arranged by organisation or by role)
Facility operations	Lists the number of birds in each part of the facility, updated twice daily. It helps to include a list of daily tasks, which can be ticked off when complete
Field operations	Shows who is in the field, their role and contact information, updated twice daily
Equipment requests	Central point for gathering requests, highlighted if urgent, to be checked daily

11

47





# POSOW

Preparedness for Oil-polluted

Shoreline cleanup and

Oiled Wildlife interventions

## Izjava o omejeni odgovornosti

Ves material, pripravljen v okviru projekta POSOW, je na voljo brezplačno. Nobenega dela te PowerPoint predstavitve se ne sme na kakršenkoli način tržiti, izposojati, prodajati najemati ali distribuirati v tržne namene. Cilj informacij, ki so na voljo v tej predstavitvi, je izključno zaradi poenostavitve dostopa do informacij na področju pripravljenosti in odziva na onesnaževanje z nafto z ladij v Sredozemskem morju. POSOW predstavitve so na voljo le za informativne namene. Vsako spremembo, pregled in posodobitev gradiva, ki se bodo pripravile v okviru projekta, odobri REMPEC s privolitvijo njegovih partnerjev; navedene spremembe se vedno nanašajo na izvirnik, izdelan v okviru projekta. REMPEC in njegovi partnerji ne zagotavljajo, da je to gradivo brez napak, niti ne prevzemajo pravne odgovornosti za natančnost, popolnost ali uporabnost podatkov, vsebovanih v predstavitvi. REMPEC in njegovi partnerji ne prevzemajo odgovornosti ali obveznosti za kakršnokoli neposredno, posredno ali posledično škodo zaradi uporabe gradiva, ki je na voljo v PowerPoint predstavitev projekta POSOW.

### Uradni podatki

REMPEC: Regional Marine Pollution Emergency Response Centre for the Mediterranean Sea

REMPEC

Maritime House, Lascaris Wharf

Valletta, VLT 1921, Malta

Tel: +356 21 337 296/7/8

Fax: +356 21 339 951

E-mail: [rempec@rempec.org](mailto:rempec@rempec.org)

Urednik: F. HEBERT

