



POSOW

Preparedness for Oil-polluted

Shoreline cleanup and

Oiled Wildlife interventions

# Organiziranje i vođenje Zapovjednog centra za zauljene životinje

- Zašto je potreban Zapovjedni centar
- Što se događa kod intervencije na životinjama
- Djelovanje Zapovjednog centra
- Uspostavljanje ZC-a
- Dnevno vođenje

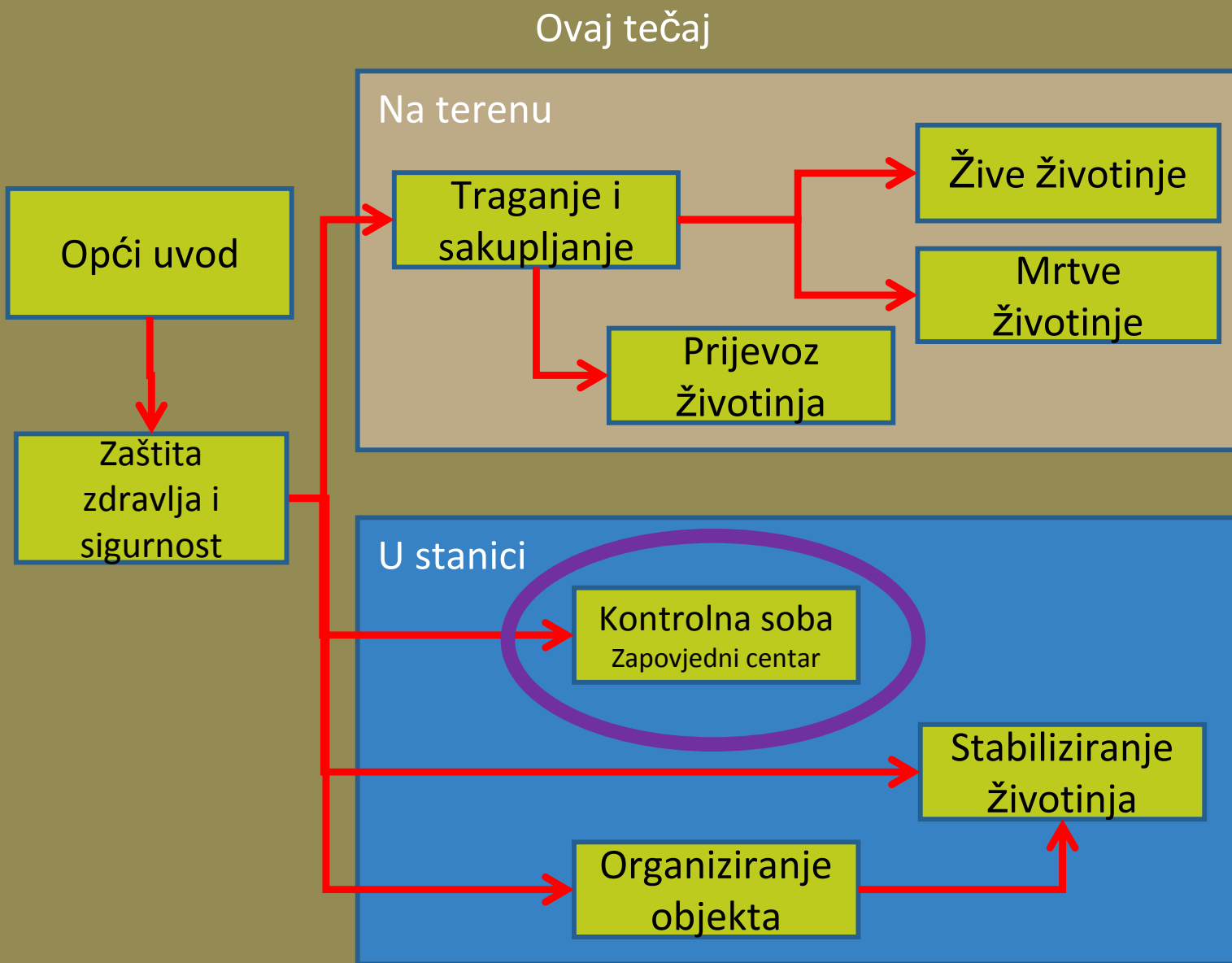


POSOW

Preparedness for oil-polluted

Shoreline cleanup and

# Pregled tečaja o fauni



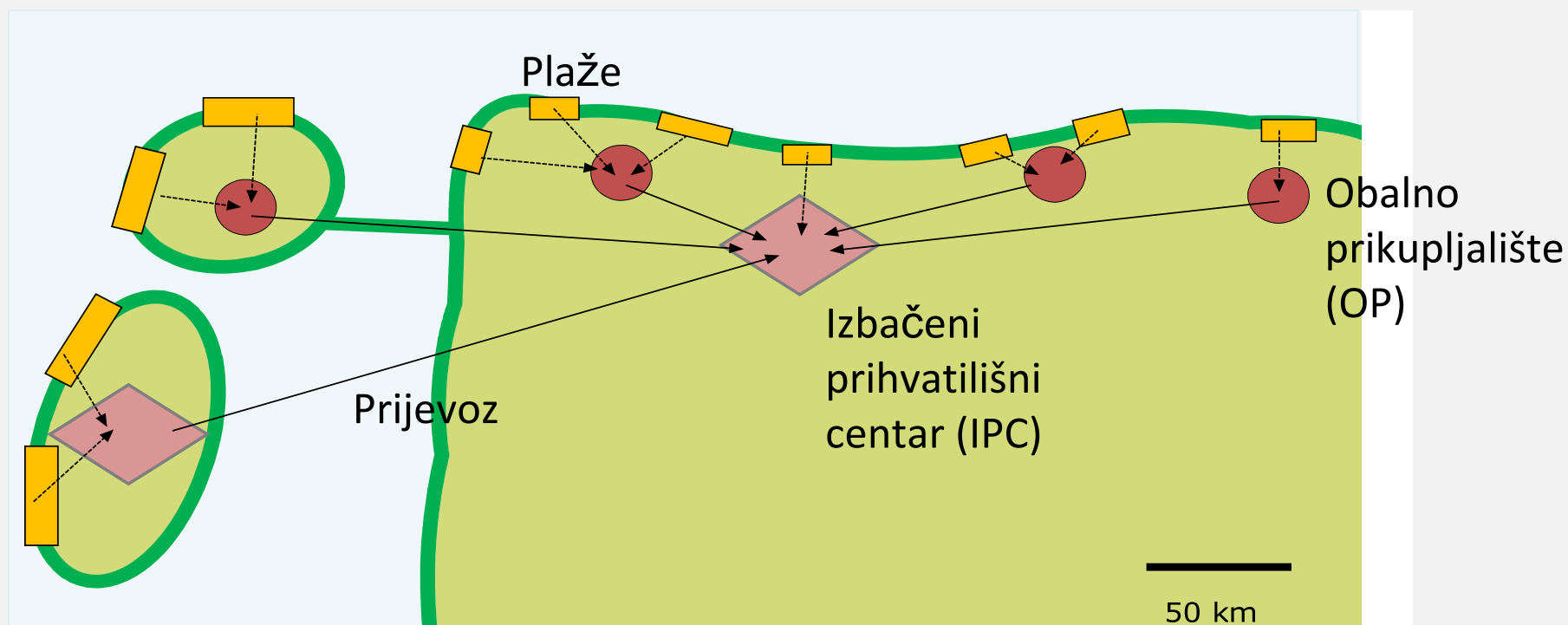
Nije uključeno

- Trijaža
- Pranje
- Rehab
- Puštanje

# Zašto je potreban Zapovjedni centar?

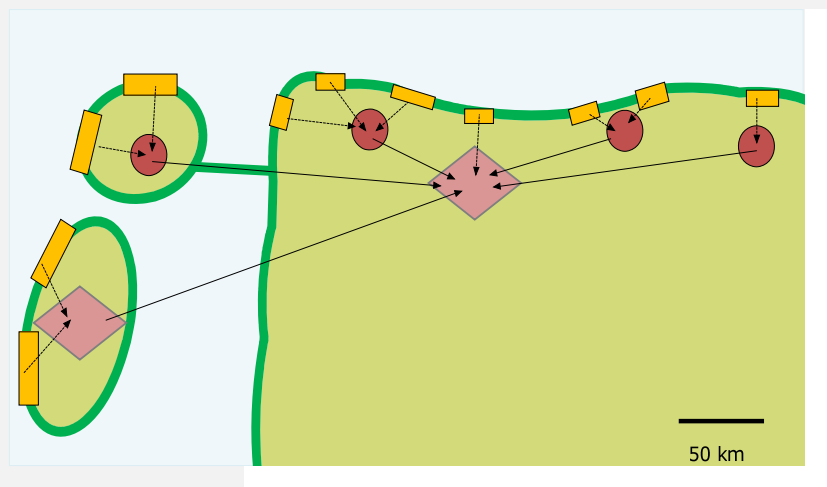
- Nadziranje intervencije na životinjama
  - Upravljanje resursima kod intervencije na životinjama
  - Dnevno prikupljanje podataka
  - Planiranje i odlučivanje
- Komuniciranje s (glavnim) Zapovjednim centrom incidenta

# Što se događa?



- Plaže: Traganje i sakupljanje
- OP: Privremeno zadržavanje
- IPC: Stabiliziranje, održavanje životinja na životu
- Prijevoz

# Djelovanje Zapovjednog centra



Što se događa danas?

- Tko? Što? Gdje? Kako?
- Prijavljena uska grla



Odluke uprave

- Osigurati provođenje

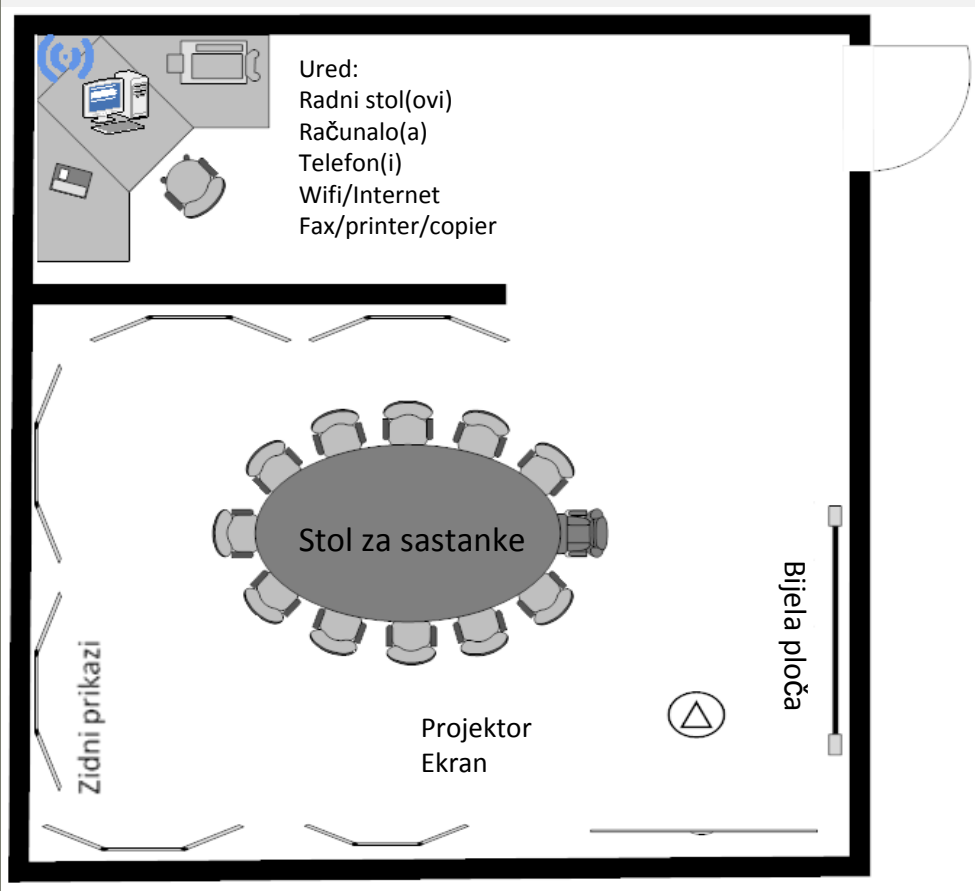


Planiranje za sutra

- Tko? Što? Gdje? Kako?
- Provjeriti da se to može

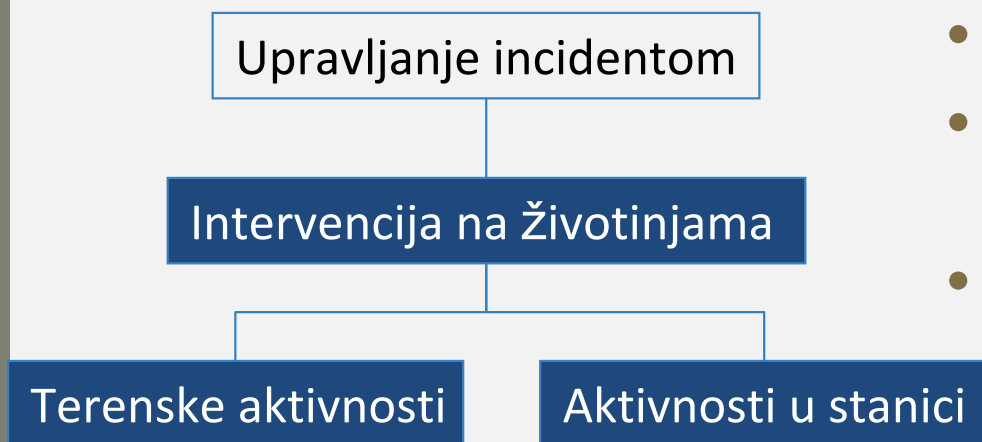


# Organiziranje



- Gdje?
  - Tri mogućnosti:
    - Zapovjedni centar za incidente
    - Ured (u ministarstvu?)
    - U rehab centru
- Kako?
  - Ured (oprema)
  - Soba za sestanke
  - Prikazi (na zidovima)

# Dnevno vođenje



- Podijelite uloge i odgovornosti
- Osigurajte izravnu vezu sa Zapovjednim centrom incidenta
- Sakupite podatke o:
  - Terenskim aktivnostima
  - Prijevozu
  - Aktivnostima u objektu
- Prikažite sakupljene podatke (pobrinite se za ažuriranje)
- Donesite odluke o upravljanju
  - Planirani sastanci



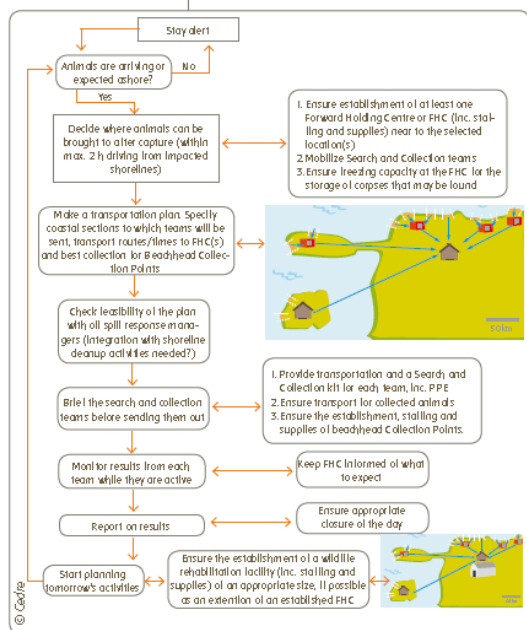
# POSOW Priručnik

1

## Managing the early days of a wildlife response

When an oil spill is reported, animals may already have started arriving on the shoreline. This sheet provides guidance as to how to start up an effective response: ensuring that animals are picked up safely and transported to facilities where they receive care for several days before being washed.

Types of facilities (explaining symbols in figures)



**Beachhead Collection Point (BCP)**

A warm and ventilated place where live animals can spend a few hours before they can be transported. No animal stays here overnight!

**Forward Holding Centre (FHC)**

A facility where animals can be provided with pre-wash care (see technical datasheets for set up, layout and procedures). Animals can stay here for many days, but are not released from here. Refer to Datasheet #3.

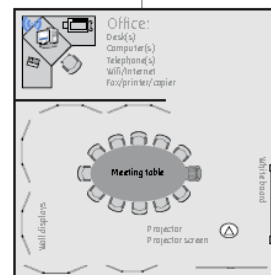
**Wildlife Rehabilitation Facility**

A facility that is in fact a Forward Holding Centre extended with adequate washing and post-wash care capabilities. Setting up and running a Wildlife Rehabilitation Centre needs the involvement of qualified experts!

## Setting up and running a command centre

Example of the physical set-up of the command centre with a checklist of its equipment

The command centre is an important place in the wildlife operations. It must be set up as an integrated part of the overall spill management, so that decisions can be made overseeing all the relevant information on both sides.



- Office:**
  - Desk(s) and chairs
  - Office tools (paper, pens, tape, stapler, hole punch...)
  - Computer
  - Internet connection (wifi)
  - Telephone land line(s)
  - Fax/printer/copier
- Meeting room:**
  - Meeting table and chairs
  - Wall displays (or empty walls)
  - Flip chart with paper and pens
  - Whiteboard with pens and cleaner
  - Projector
  - Projector screen (or white wall)


Suggestions for organising the information on display in the meeting room

Heading	Information presented (printed documents or hand written on flip chart sheets)
Spill history	The source of oil, date of spill, exact location, oil type, amount and properties, future issues and contact information for the spill advisor
Species information	Information on species affected, habitat, distribution, identification photos, life history, previous oil spill knowledge (post-release survival data) and care/washing information if available
Rehabilitation Process	Description of process (with photos), triage policy and euthanasia policy
Key facts [Media]	Media lines, bird numbers (overview), news articles
Training programme	List of roles and trainers (with photo) for allocation of trainees
Maps	Showing oil spill area, sensitive areas, collection points and rescue facilities
Facility layout	Room plan and copy of health and safety protocols
Team information	Name, organisation, role and contact number with coordinators highlighted (can be arranged by organisation or by role)
Facility operations	Lists the number of birds in each part of the facility, updated twice daily. It helps to include a list of daily tasks, which can be ticked off when complete
Field operations	Shows who is in the field, their role and contact information, updated twice daily
Equipment requests	Central point for gathering requests, highlighted if urgent, to be checked daily



Hvala lijepa!

Questions? Pitanja?  
Des questions? Preguntas?  
ερωτήσεις? Mistoqsijiet?  
Otázky? Vprašanja?  
Domande?





# POSOW

Preparedness for Oil-polluted

Shoreline cleanup and

Oiled Wildlife interventions

## Odricanje od odgovornosti

Sav materijal proizveden u okviru projekta POSOW dostupan je besplatno. Niti jedan dio ove PowerPoint prezentacije neće, prodajom ili na drugi način, biti posuđivan, prodavan, iznajmljivan ili cirkuliran u komercijalne svrhe. Informacije sadržane u ovoj prezentaciji namjenjene su jedino olakšavanju pristupa informacijama s područja spremnosti za intervenciju i intervencije kod onečišćenja Sredozemnog mora s brodova. POSOW prezentacije pripremljene su isključivo u svrhu informiranja. Svaki dodatak, reviziju i ažuriranje materijala proizvedenog u okviru projekta mora autorizirati REMPEC uz suglasnost svojih Partnera i mora se referirati na izvorni dokument izrađen u okviru projekta. REMPEC i njegovi partneri ne tvrde da je ovaj material bez pogrešaka i ne preuzimaju bilo kakvu zakonsku odgovornost za točnost, potpunost ili korisnost informacija sadržanih u Prezentaciji. REMPEC i njegovi partneri ne preuzimaju odgovornost ili obvezu za bilo kakve izravne, neizravne ili posljedične štete koje bi mogle proisteći iz korištenja materijala dostupnih na PowerPoint prezentacijama iz projekta POSOW.

Pravna obavijest

REMPEC: Regional Marine Pollution Emergency Response Centre for the Mediterranean Sea

REMPEC

Maritime House, Lascaris Wharf

Valletta, VLT 1921, Malta

Tel: +356 21 337 296/7/8

Fax: +356 21 339 951

Email : [rempec@rempec.org](mailto:rempec@rempec.org)

Urednik: F. HEBERT

